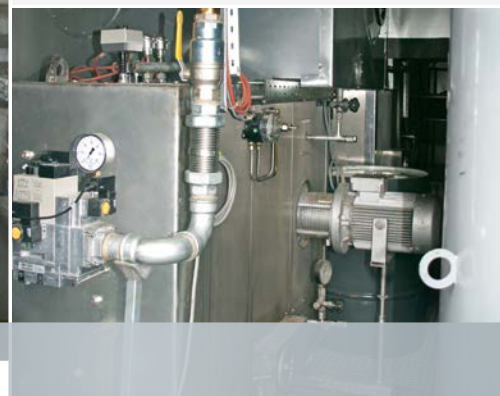


## WASTE HEAT UTILISATION IN A THERMAL OIL STOVE FOR A BAKERY

REFERENCE PROJECT



### BÄCKEREI MAYER GMBH & CO.

Kastellstrasse 19, 88316 Isny im Allgäu, Germany

The flue gas from the thermal oil stove is routed via a fan to the BOMAT O1-GG-1064-NT-4-K-3 flue gas heat exchanger. The thermal energy it contains is supplied to a 3000 litre DHW cylinder.

<b>Heat source:</b>	Heutf thermal oil stove 250 kW
<b>Fuel:</b>	<input type="radio"/> Fuel oil <input checked="" type="radio"/> Natural gas <input type="radio"/> Sewer gas <input type="radio"/> Biogas
<b>Flue gas heat exchanger:</b>	O1-GG-1064-NT-4-K-3 (year of manufacture: 2007)
<b>Flue gas temperature:</b>	approx. 200 °C (upstream of HE) ➔ approx. 70 °C (downstream of HE)
<b>Coolant temperature:</b>	approx. 35 °C (upstream of HE) ➔ approx. 55 °C (downstream of HE)
<b>Heat recovery per year:</b>	approx. 55,000 kWh
<b>CO<sub>2</sub> reduction per year:</b>	approx. 11,000 kg

➔ Payback period **less than 4 YEARS.**

**BOMAT Energiesysteme GmbH**

Zum Degenhardt 49  
88662 Überlingen

T +49 (0) 75 51.80 99 70  
F +49 (0) 75 51.80 99 71

info@bomat.de  
www.bomat.de

